

Partner for JDF integration

Agenda

- About ixact
- Product overview
- Integration samples
- PrintTalk: business workflow
- ixPPS production control desk
- ixJED toolset



- Founded 1998
- Software for printing industry
- Since 2002 specialized in JDF developing
- Since 2004 member of CIP 4
- Customers worldwide
- Located 15 km to Frankfurt / Main Germany



Products

for vendors

- technology consulting
- software library
- integration framework
- toolkit for service, development & test

for printers

- integration consulting
- MIS with production control desk
- individualized JDF integration



Customers



STAR PUBLISHING



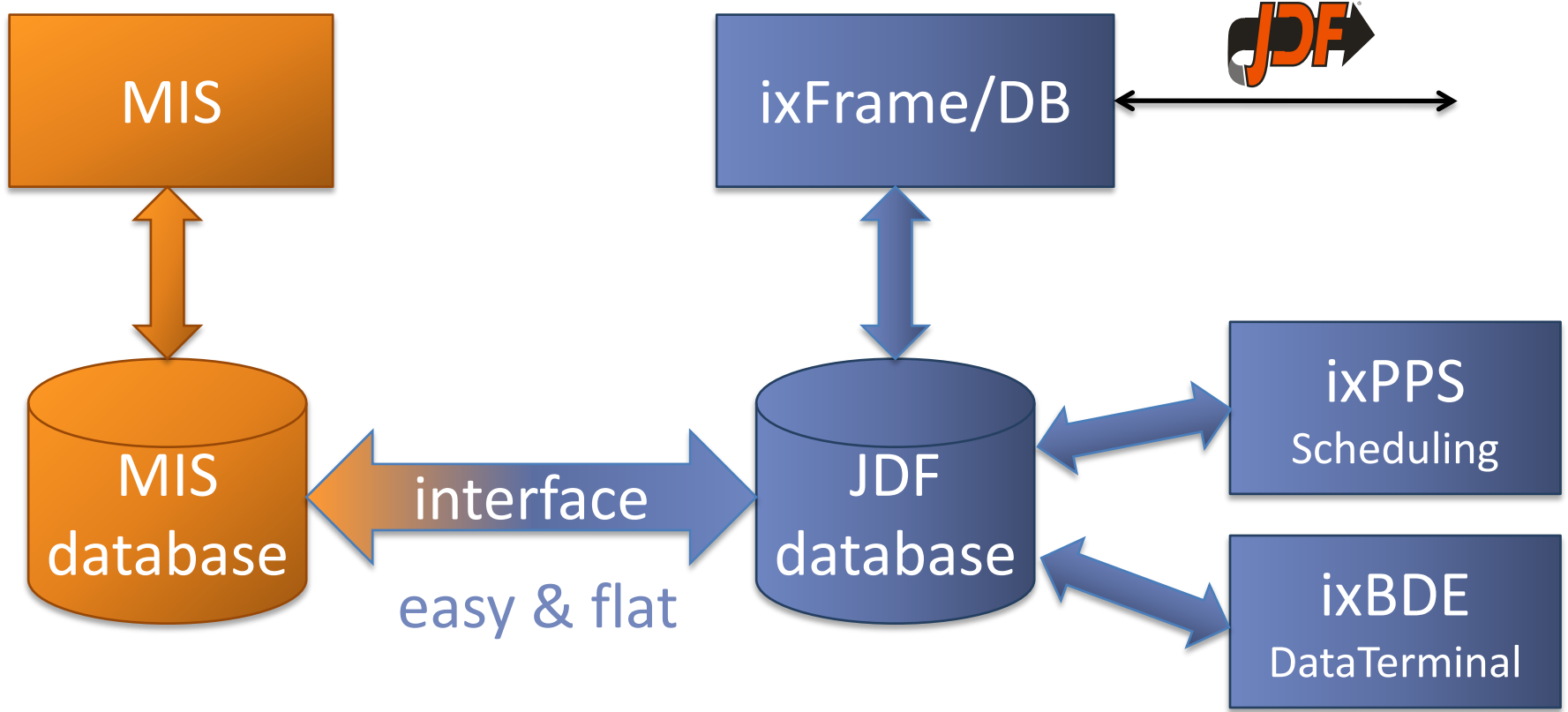


Product ixFrame

- black box to communicate with JDF workflow
- mapping from customer namespace to JDF
- four versions available
MIS DB, XML, machines, PrintTalk



ixFrame/DB





ixFrame interoperability

PrePress:

- Agfa: installed
- HD: installed
- Kodak: available
- FujiFilm: Test in progress
- Screen: Test in progress



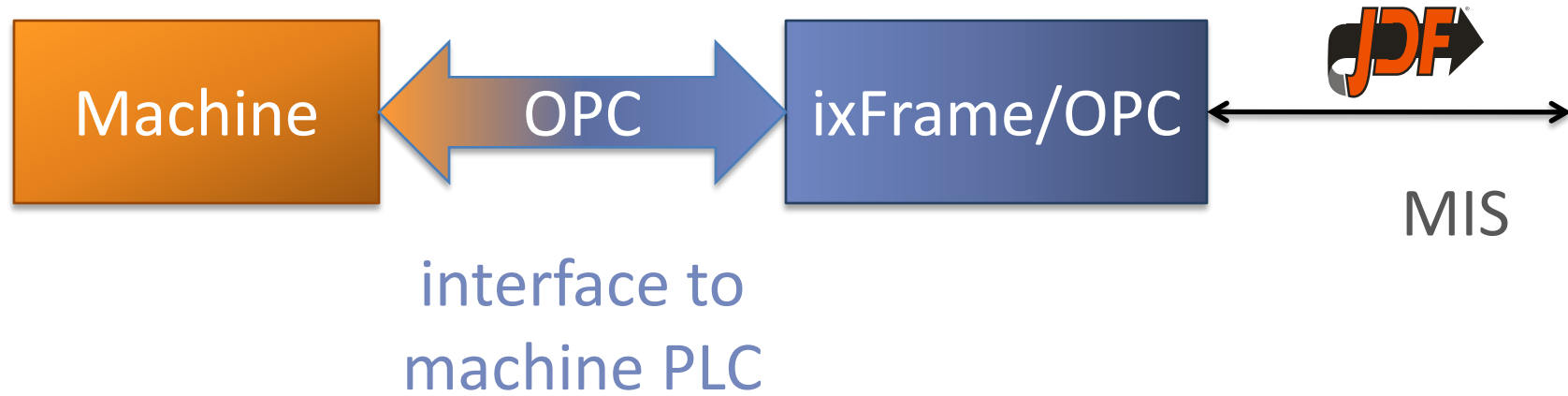
ixFrame interoperability

Press:

- manroland: available
- KBA: available
- Komori: installed
- HD: installed



ixFrame/OPC



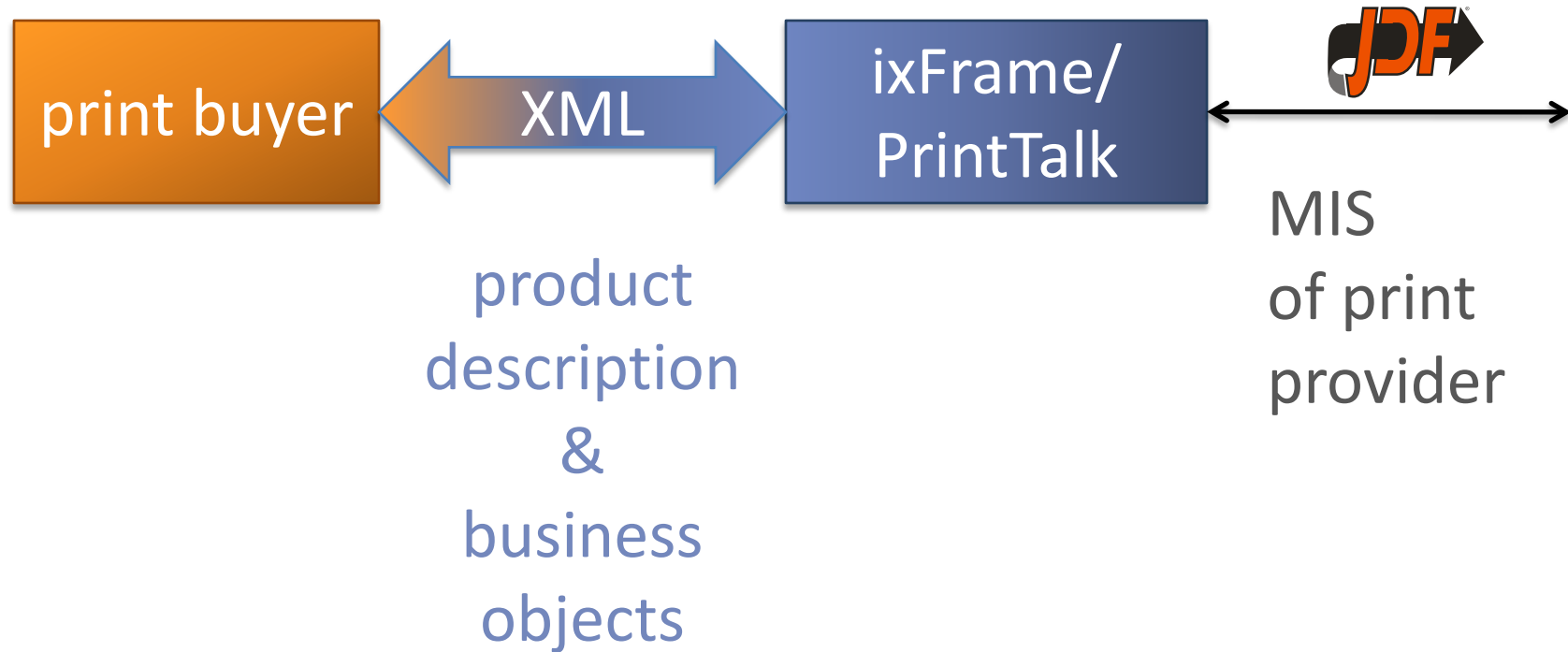


PostPress:

- hohner HSB 10.000 is installed.
- With four MIS vendors ixFrame is tested and available.
- ixFrame can read and write PostPress for hohner



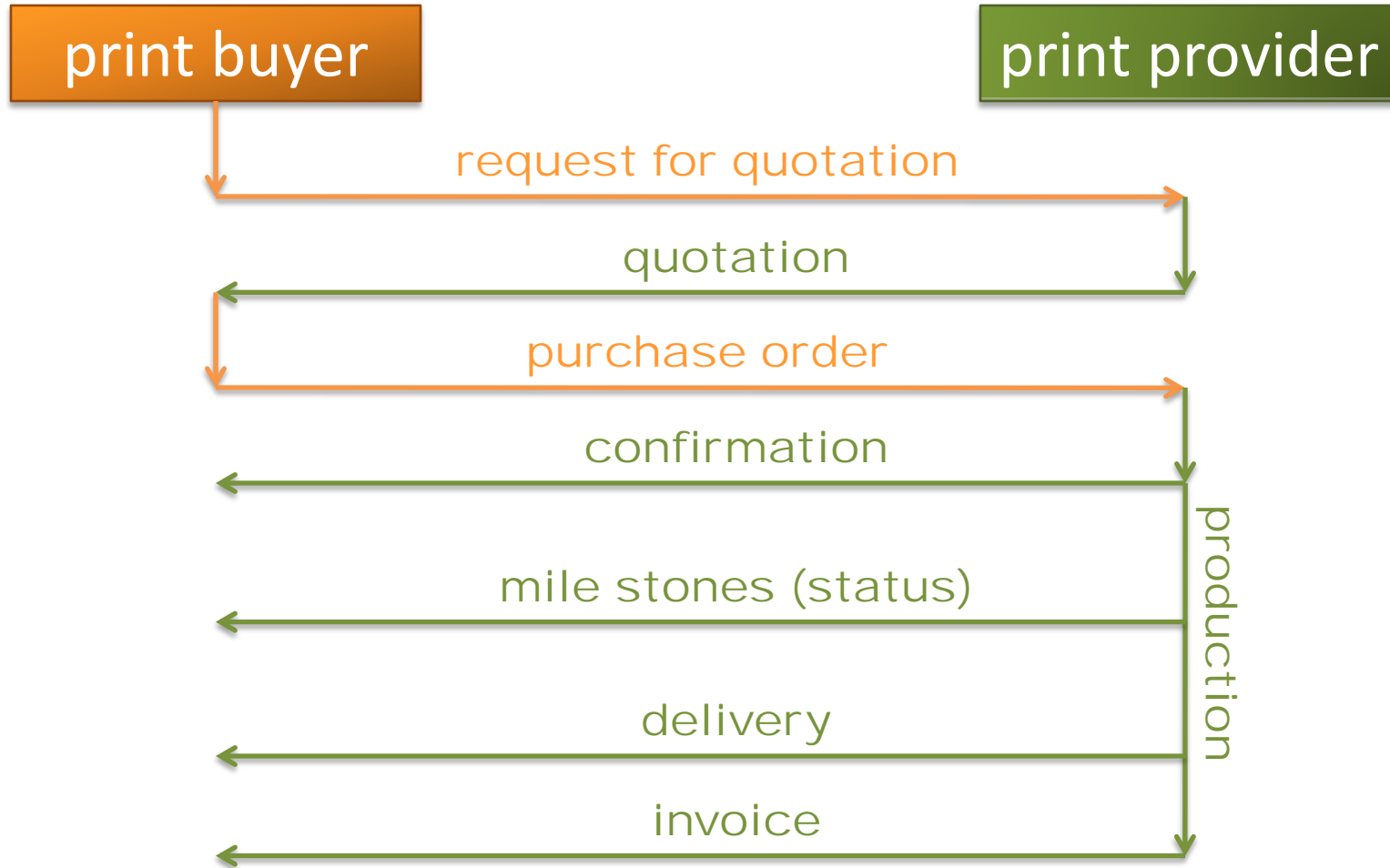
ixFrame/PrintTalk



STAR PUBLISHING



PrintTalk sequence





component library:

.net & com API

sending & receiving JDF/JMF

job queue handling

http server

...





Product ixPPS

- JDF based production control desk
- modern state of the art GUI
- efficient scheduling board with status reports of production
- automatic detection of collisions
- specific cost center view for process optimization
- optical visualization of process status



Product ixJED

- worldwide used toolset
development, service & test
- editing and viewing of JDF / JMF Files
- send & receive of JDF / JMF
- sniffing of network traffic with
detailed packet analyzing
- scripting for workflow simulation and
testing